

SAE 10000 PSI

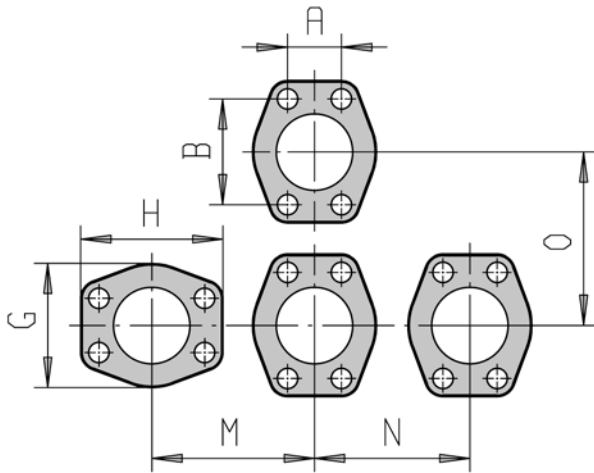
Product

Page

Retain Ring Flanges	175
Grooving Direct On To Pipe	176
Flange for Welding	177
Elbow Block	178
Tee Block	179
Male Thread Flange (NPT)	180
Blind Flange	181
Retain Ring	182
Bonded Seal	183



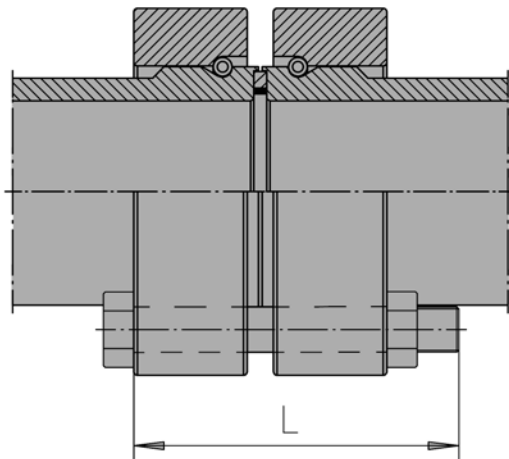
SAE 10000 PSI



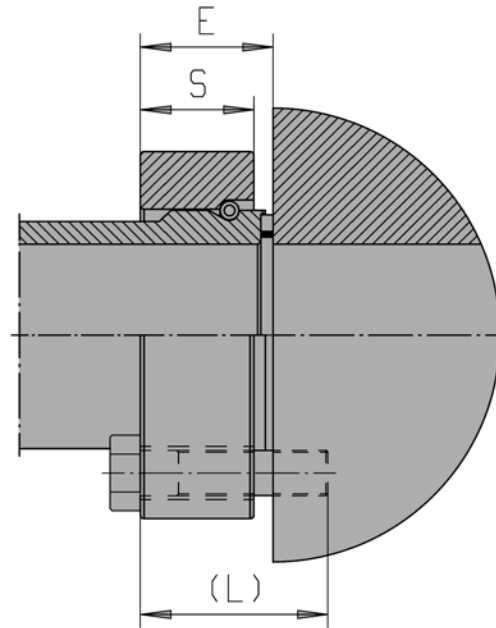
Note! When stainless steel piping system, component or module conforms with Pressure Equipment Directive 97/23/EL, (and sizes are from 1 1/4" to 2") max. allowed working pressure is 59% of the informed value.

Note! Requirements for pipe material properties:

- Tensile strength min. 490 N/mm²
- Yield strength min. 300 N/mm²



Flange to flange



Flange to block

Size	Part No	ID Code	A	B	G	H	M	N	O	S	E	Bolt L DIN 912, 8.8	W.P. bar	Bolt Torque	Weight (kg)
1/2"	908	11030001	18.2	40.5	48	56	56	53	59	30	33	M8x80(45)	690	33	0.28
3/4"	912	11030300	23.8	50.8	60	71	70	66	75	35	38	M10x90(50)	690	56	0.41
1"	916	11030600	27.8	57.2	70	81	80	75	84	35	38	M12x90(55)	690	92	0.71
1 1/4"	920	11030900	31.7	66.7	78	95	90	83	99	40	44	M14x110(60)	690	140	0.99
1 1/2"	924	11031200	36.5	79.4	95	113	108	101	116	40	45	M16x110(65)	690	214	1.41
2"	932	11031500	44.5	96.8	114	133	128	120	137	60	65	M20x150(90)	690	293	3.03

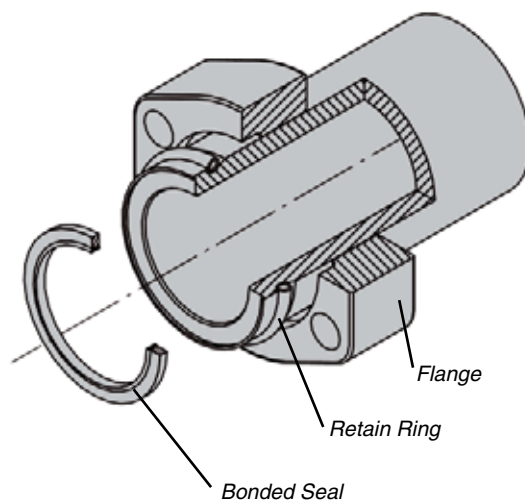
Flange material : Carbon Steel plate (St52.3).
Other materials by request.

L= Flange to flange
(L)= Flange to block

SAE 10000 PSI

Grooving Direct on to Pipe

Drilled to SAE 6000 psi Code 62

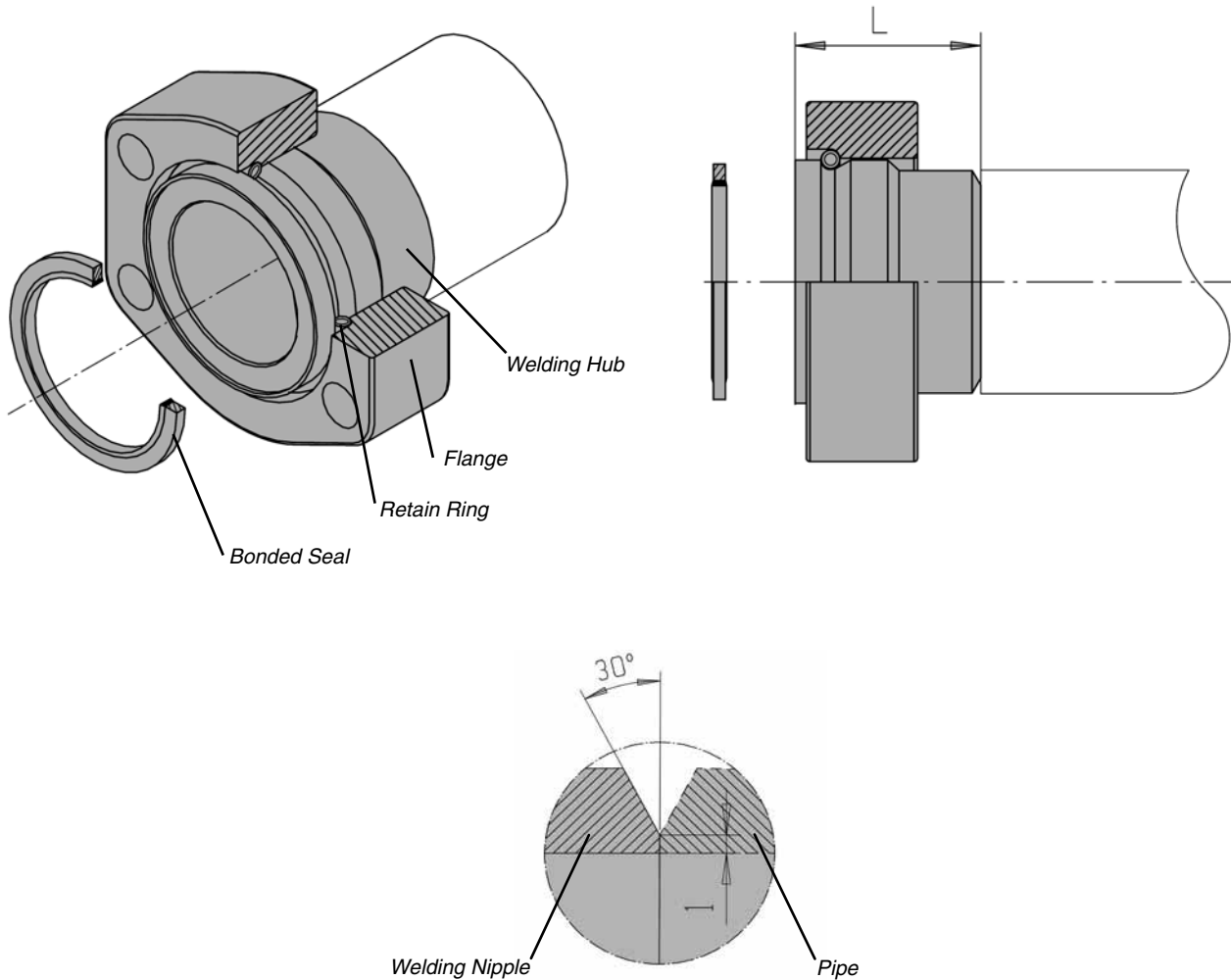


Note! Requirements for pipe material properties:

- Tensile strength min. 490 N/mm²
- Yield strength min. 300 N/mm²

Metric

Size	Pipe Size	Flange Part No	Flange ID Code	Retain Ring Part No	Retain Ring ID Code	Part No	ID Code
1/2"	21.3x7.5	908/21.3	11032395	08/21.3	19020002	0821	19030010
3/4"	26.7x7.8	912/26.7	11032400	12/26.7	19020012	0823	19030014
1"	33.4x9.1	916/33.4	11032420	16/33.4	19020022	1633	19030034
1 1/4"	42.2x9.7	920/42.2	11032440	20/42.2	19020032	2042	19030044
1 1/2"	48.3x10.1	924/48.3	11032460	24/48.3	19020042	2448	19030052
2"	60.3x11.1	932/60.3	11032500	32x	19020062	3260	19030074



Metric

Size	Pipe Size	Complete Part No	Complete ID Code	L	Weight (kg)	Body Part No	Body ID Code
1/2"	21.3x7.5	908086		45	0.40	08086	13010061
3/4"	26.7x7.8	912086		45	0.70	12086	13010125
1"	33.4x9.1	916086		50	0.95	16086	13010233
1 1/4"	42.2x9.7	920086		50	1.40	20086	13010329
1 1/2"	48.3x10.1	924086		60	2.00	24086	13010407
2"	60.3x11.1	932086		75	2.35	32086	13010468

Material by request.

Flanges page 175
Bonded seals page 183
Retain Rings page 182

SAE 10000 PSI

Elbow Block

Drilled to SAE 6000 psi Code 62

TUBES & PIPES

CLAMPS

VALVES

BITE TYPE
FITTINGS

SAE J514 JIC
FLARE FITTINGS

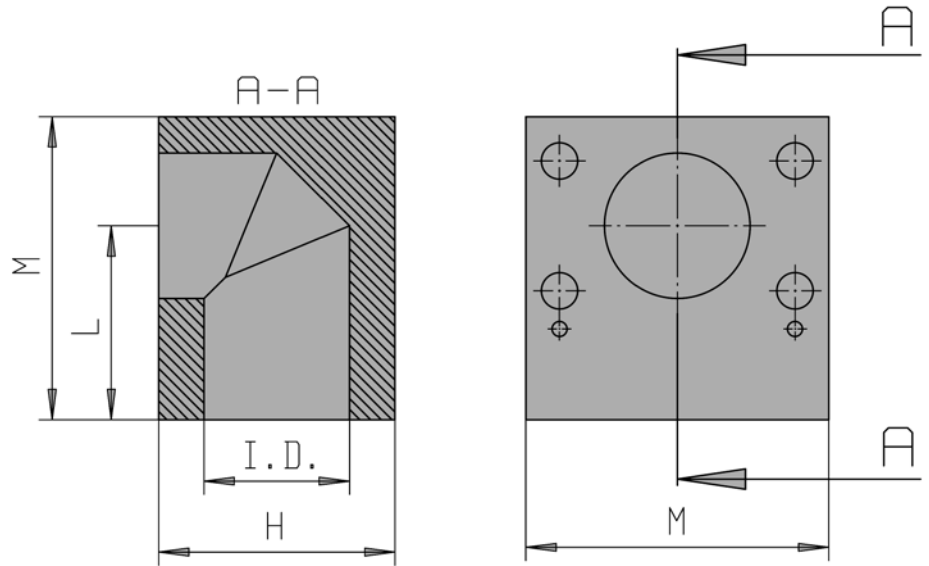
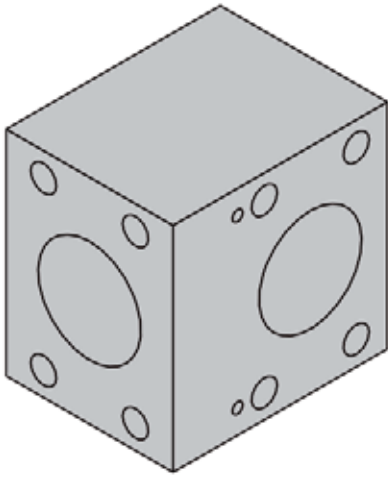
HOSES &
HOSE COUPLINGS

ADAPTORS

SPECIAL
SOLUTIONS

MACHINES

TECHNICAL
INFORMATION

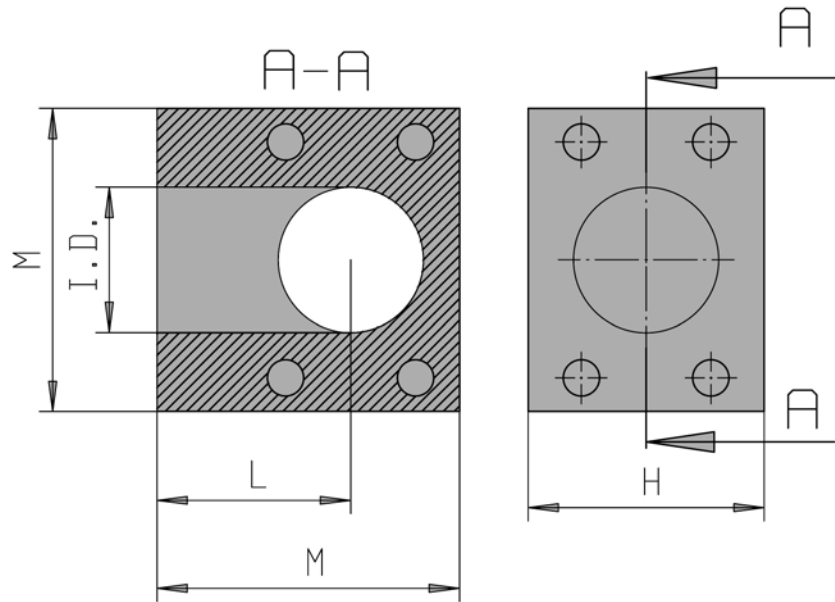
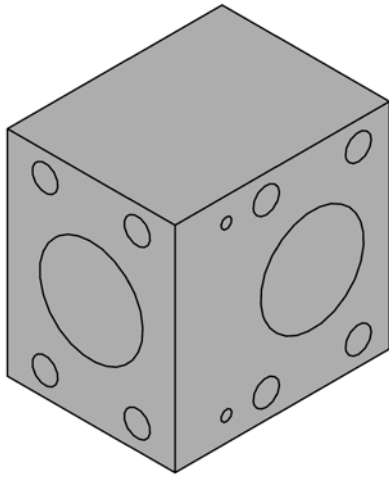


Size	Part No	ID Code	H	L	M	I.D.	Weight (kg)
1/2"	908115	16030308	40	36	56	6.3	1.2
3/4"	912115	16030312	48	49	73	11.1	1.4
1"	916115	16030316	48	55	79	15.2	2.2
1 1/4"	920115	16030320	58	63	92	22.8	2.6
1 1/2"	924115	16030324	68	68	102	28.1	3.7
2"	932115	16030332	88	90	134	38.1	8.2

Materials by request.

Drilled to SAE 6000 psi Code 62

Tee Block



TUBES & PIPES

CLAMPS

VALVES

BITE TYPE FITTINGS

SAE J514 JIC FLARE FITTINGS

HOSES & HOSE COUPLINGS

ADAPTORS

SPECIAL SOLUTIONS

MACHINES

TECHNICAL INFORMATION

Size	Part No	ID Code	H	L	M	I.D.	Weight (kg)
1/2"	908116	17020808	40	36	56	6.3	1.2
3/4"	912116	170208121	48	49	73	11.1	1.3
1"	916116	17020816	48	55	79	15.2	2.1
1 1/4"	920116	17020820	58	63	92	22.8	2.3
1 1/2"	924116	17020824	68	68	102	28.1	3.9
2"	932116	17020832	88	90	134	38.1	7.1

For reducing Tee specify flange on port 2 or 3.
Materials by request.

SAE 10000 PSI

Male Threaded Flange (NPT)

Drilled to SAE 6000 psi Code 62

TUBES & PIPES

CLAMPS

VALVES

BITE TYPE FITTINGS

SAE J514 JIC FLARE FITTINGS

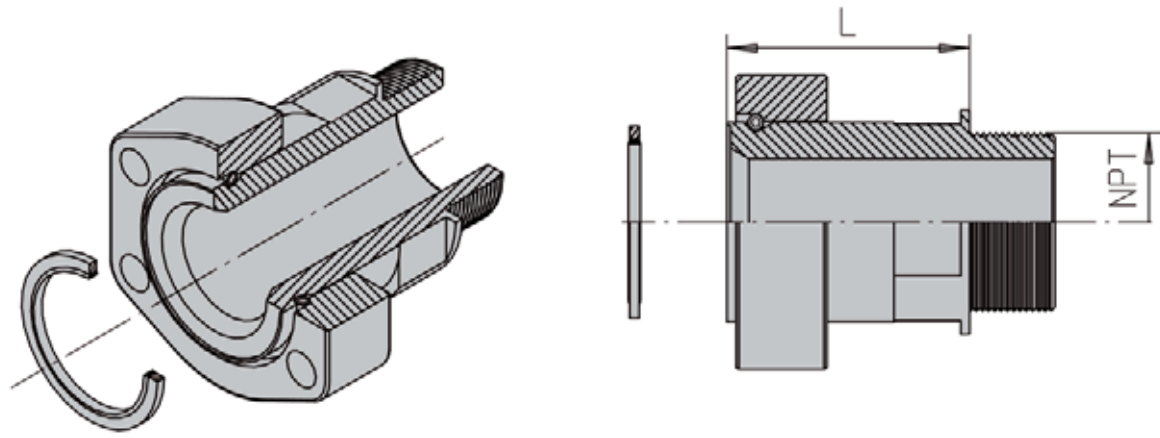
HOSES & HOSE COUPLINGS

ADAPTORS

SPECIAL SOLUTIONS

MACHINES

TECHNICAL INFORMATION

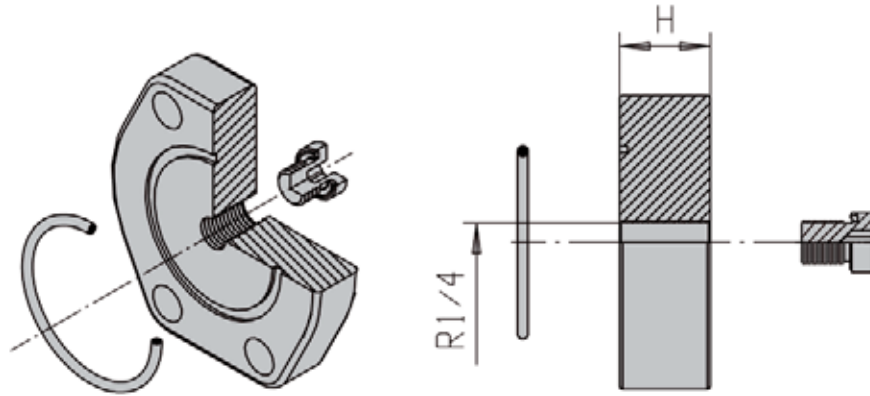


Size	Complete Part No	Complete ID Code	L	NPT	Weight (kg)
1/2"	908114	13056008	50	1/2"	0.5
3/4"	912114	13056012	63	3/4"	0.7
1"	916114	13056016	63	1"	0.9
1 1/4"	920114	13056020	67	1 1/4"	1.4
1 1/2"	924114	13056024	75	1 1/2"	2.3
2"	932114	13056032	80	2"	2.6

Materials by request.

Drilled to SAE 6000 psi Code 62

Blind Flange



TUBES & PIPES

CLAMPS

VALVES

BITE TYPE FITTINGS

SAE J514 JIC FLARE FITTINGS

HOSES & HOSE COUPLINGS

ADAPTORS

SPECIAL SOLUTIONS

MACHINES

TECHNICAL INFORMATION

Size	Part No	ID Code	H	Weight (kg)
1/2"	908125	190552908	22	0.4
3/4"	912125	190552912	23	0.5
1"	916125	190552916	25	0.7
1 1/4"	920125	190552920	30	1.2
1 1/2"	924125	190552924	33	2.4
2"	932125	190552932	38	3.3

Material by request.

SAE 10000 PSI**Retain Ring****Drilled to SAE 6000 psi Code 62**

TUBES & PIPES

CLAMPS

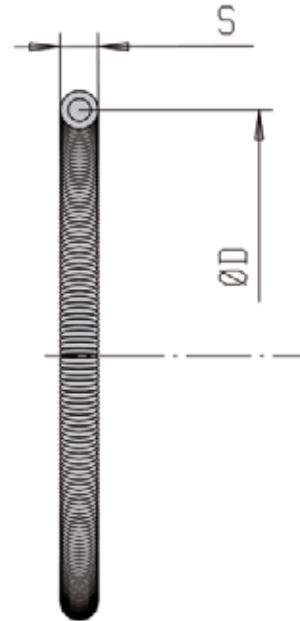
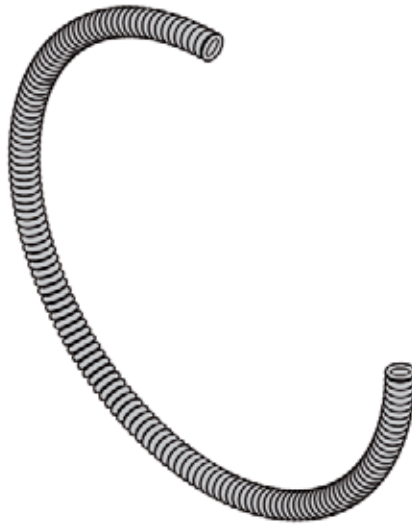
VALVES

BITE TYPE
FITTINGSSAE J514 JIC
FLARE FITTINGSHOSES &
HOSE COUPLINGS

ADAPTORS

SPECIAL
SOLUTIONS

MACHINES

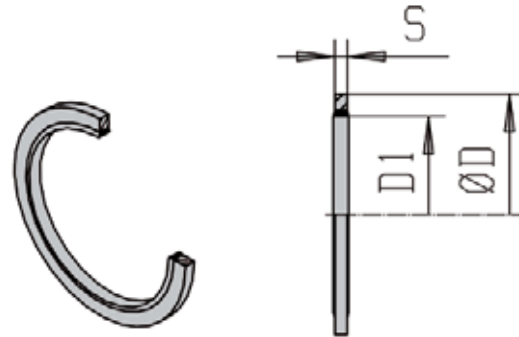
TECHNICAL
INFORMATION**Metric**

Size	Part No	ID Code	Pipe Size	D	S
1/2"	08	19020001	26x6	30	4
3/4"	12	19020010	36x8	40	4
1"	16	19020020	39x7.5	44	5
1 1/4"	20	19020030	46x8	51	5
1 1/2"	24	19020040	56x8.5	61	5
2"	32	19020060	66x8.5	71	5

Material: AISI 302, special treated.

Drilled to SAE 6000 psi Code 62

Bonded Seal



TUBES & PIPES

CLAMPS

VALVES

BITE TYPE FITTINGS

SAE J514 JIC FLARE FITTINGS

HOSES & HOSE COUPLINGS

ADAPTORS

SPECIAL SOLUTIONS

MACHINES

TECHNICAL INFORMATION

Metric

Size	Part No	ID Code	S	D	D1
1/2"	0823	19030014	2.03	23.80	17.28
3/4"	1213	19030020	2.34	33.27	24.26
1"	1629	19030030	2.34	34.93	27.05
1 1/4"	2030	19030040	3.25	42.80	33.89
1 1/2"	2432	19030050	3.25	52.38	42.93
2"	3219	19030070	3.25	63.50	51.69

Material: Steel and Perbunan or Stainless Steel and Perbunan.